



Part of the **Gillgroup** 
Delivering Excellence



We are committed to delivering safe, cost effective, technically compliant solutions to meet the demands of the worldwide paving market.









Gill Civil Engineering Limited (GCEL) is a member of the Gill Group of Companies, a privately owned enterprise which incorporates; Civil Engineering, Plant Hire, Builders Merchants, Ready Mixed Concrete, Commercial Insurance and Aviation with a combined turnover in excess of £50 million.

Through our core values of safety, quality and innovation, the company has achieved recognition and reputation as a specialist contractor in the UK and Overseas.

With offices in Middle East and Europe, GCEL is one of the leading Slipform and Handlay Pavement Quality Concrete contractors.

Our principal markets include:

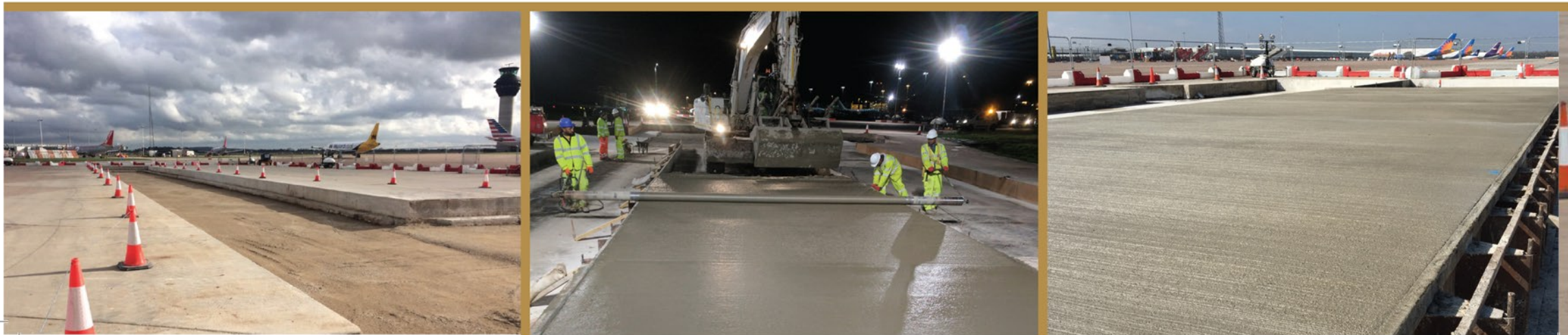
- Civil Airports
- Defence Airfields
- Highways
- Ports
- Industrial



Airports and Defence Contracts

Our range of services include:

- Removal of existing Pavement/Earthworks
- Onsite Concrete Batching Plants
- Concrete Transport via Spin Mixer or ADT
- Slipform Paving
- Installation of Sub-base, Lean Mix and Pavement Quality Concrete
- AGL Ducting and Gatic F900 Surface Water Drainage Systems
- Delethalisation of Runways
- UKAS accredited Onsite Concrete Testing Facilities

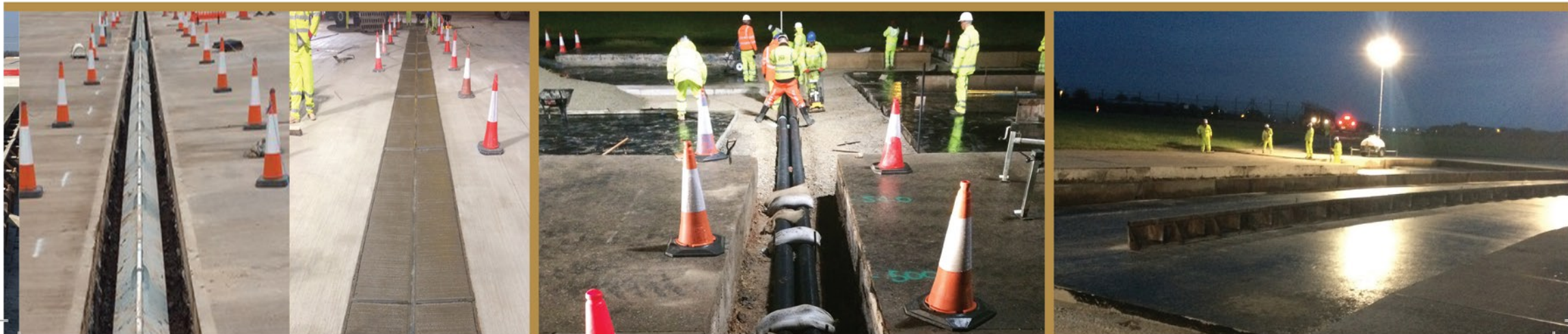


Notable Projects – Airports:

- Birmingham International Airport
- East Midlands Airport
- Edinburgh Airport
- Guernsey Airport
- Hawarden Airport
- London Gatwick Airport
- London Luton Airport
- London Southend Airport
- Manchester Airport

Notable Projects – Defence Airfields:

- Hereford Barracks
- MoD Boscombe Down
- RAF Honington
- RAF Lakenheath
- RAF Marham
- RAF Northolt
- RAF Shawbury
- RAF Valley
- RAF Waddington
- RNAS Yeovilton





Batching Plant



Dump Truck ADT 25 Ton



In-situ Concrete Testing



Handlay



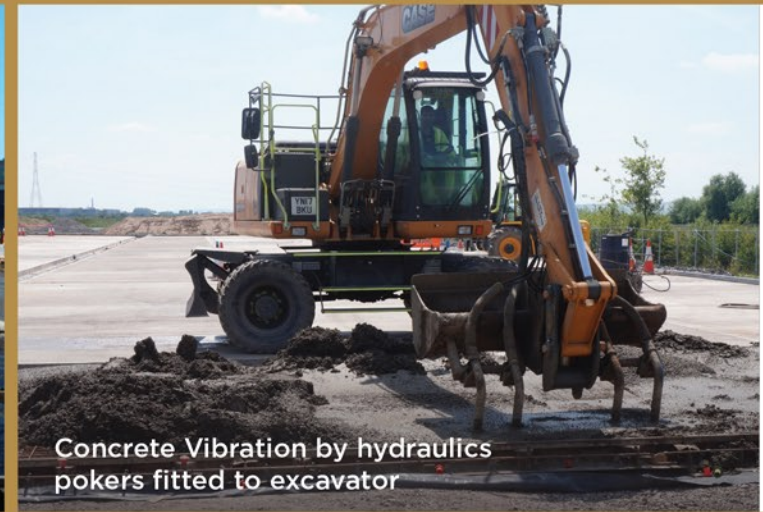
Slipform Paving



Lifting of Slab Using Vacuum Lifter



Formwork



Concrete Vibration by hydraulics
pokers fitted to excavator



Brush Finished Pavement Quality Concrete



Protection from Weather - Tents and Curing Spray



Highways

GCEL install various Slipform and Handlay products used on Motorways and Guided Busways including: Concrete Barriers (BBS licensed), V Channels, Slot Drains, Continuously Reinforced Concrete Pavement (CRCP) and Full Depth Bay Replacement.

Notable Projects:

- A465 Heads of the Valley (Installation of V Channel and BBS Concrete Barrier)
- Bristol Guided Busway (CRCP)
- Bristol M5 J22-23 (Installation of BBS Concrete Barrier)
- M42 J3A-4 (Full Depth PQ-X Concrete Bay Replacement)
- M54 J3-5 (Full Depth PQ-X Concrete Bay Replacement)

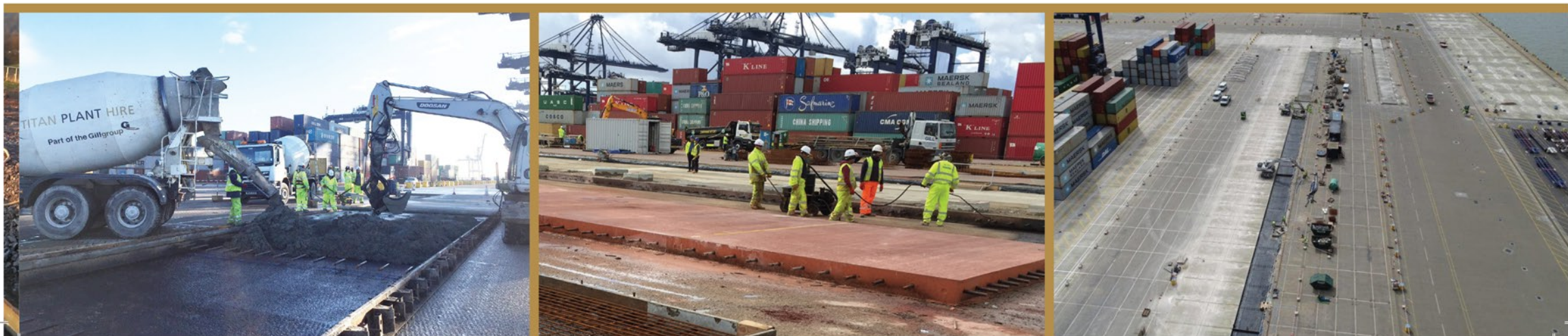


Ports

Carrying out works in areas with moving cranes and heavy vehicle traffic, our team understand the importance of health and safety in high risk areas. Working alongside our clients to ensure minimal disruption in a live port environment. Between 2014-2016, GCEL undertook the Port of Felixstowe Restoration project.

Works involved:

- On site Batching Plant with spin mixers
- 125,000 m² of PQC laid at various depths
- 9,000 m² of red colour PQC laid at various depths
- Installation of 4,000 lm of fin drain and carrier drains including chambers





Industrial

Our Industrial portfolio includes the installation of jointed reinforced and un-reinforced concrete pavement. Depending on project requirements GCEL can source concrete from external concrete providers or an onsite batching plant using volumetric trucks.

Notable Projects:

- DHL Poyle (Industrial Concrete Slabs)
- M5 J23 Park and Ride (Hinkley Point Freight Park)
- March, Cambridgeshire (Industrial Hardstanding)



Materials Testing Facility

GCEL are experienced in the rigorous requirements of concrete testing for Airports, MOD Airfields and other major commercial contracts. We have throughout the years implemented the testing of concrete on our contracts, but due to ever increasing demands, we have now established a permanent concrete testing laboratory in Wolverhampton, as of March 2016. The facility is UKAS approved for the following testing:

1. Sampling of Fresh Concrete
2. Determination of Slump
3. Degree of Compactability
4. Determination of Air Content
5. Making & Curing of Concrete Cubes
6. Testing Concrete Cubes
7. Testing Concrete Beams
8. Core Testing
9. Straight Edge (Surface Regularity) (Specification 033)
10. Surface Macrotexture (Specification 033)

The testing is fully compliant with requirements to British Standard & where specifically required, tailored to DIO Specification 033. The laboratory is a state of the art temperature controlled facility & equipped with the required specialist calibrated equipment to accommodate all aspects of the testing listed.





Members of Our Group



Our Partners



Testimonials

Balfour Beatty | Bristol Guided Busway

“Gill Civil Engineering were procured as a key specialist contractor on the Bristol Guided Busway by Balfour Beatty. Aided by Gill’s prompt involvement, the design was developed for the Continuously Reinforced Concrete Pavement (CRCP) Guided Busway and Gill reacted well to change and design development. Their can-do approach was well received and all parties involved contributed to the successful completion of a pioneering Guided Busway.”

Costain LTD | Port of Felixstowe

“Costain engaged Gill as our key subcontractor on the project to replace the defective paving at Felixstowe South Reconfiguration Phase 1 with PQC. The importance of Gill is emphasised by the fact that it accounted for approximately 50% of the value of the repair contract. Throughout the project, Gill provided Costain with excellent service and were motivated and co-operative. Gill also paid high regard to safety, which was particularly important in a busy, “live” Port environment with a high risk from vehicular traffic and moving cranes. Gill’s staff and operatives were an integral part of the project team and were a pleasure to work with. The project was completed 6 months ahead of the original programme and within the original budget and Gill’s contribution is recognised and highly valued by Costain.”



Gill Civil Engineering Ltd
Gill House, 140 Holyhead Road
Birmingham, West Midlands,
United Kingdom B21 0AF

Tel: +44 (0) 121 507 8702

Fax: +44 (0) 121 522 7731

Email: mail@gillcivil.com

www.gillcivil.com

